

**DO NOT SCALE! IF IN DOUBT ASK
 COPYRIGHT SIGMA SHEETMETAL**

SADDLE FLASHING

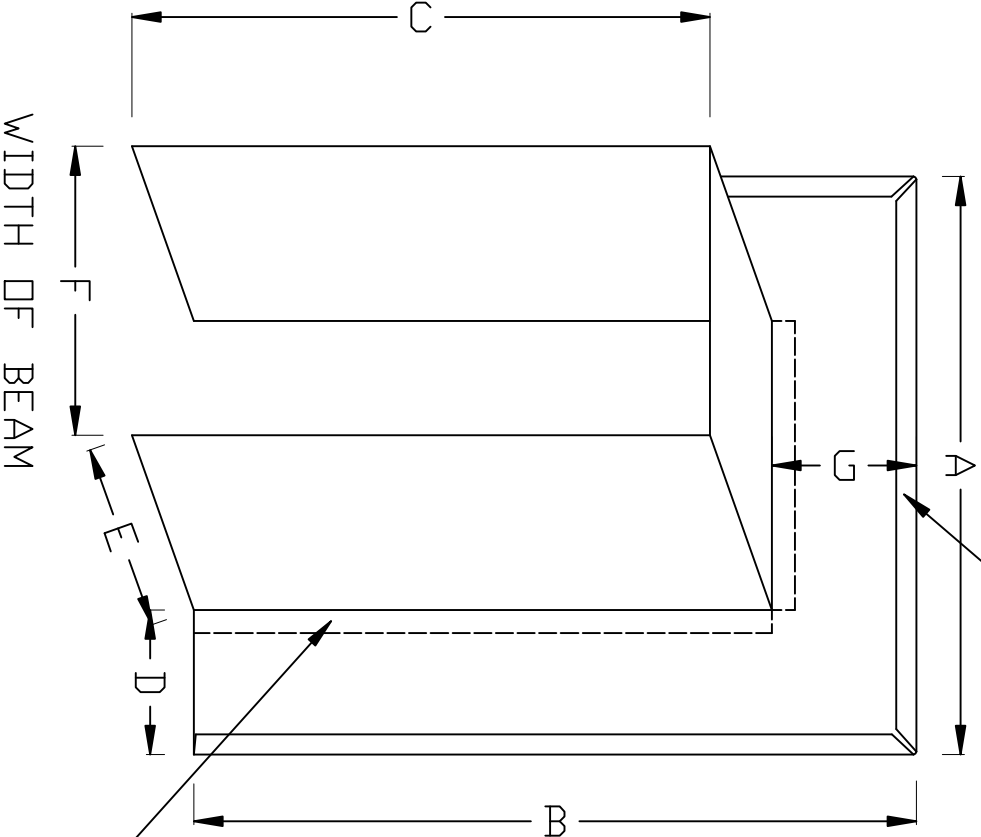
HEMMED 7MM
 TOP & SIDES

MATERIAL TYPE
 .55 GALVANISED
 .55 STAINLESS
 .55 ALUMINIUM

MEASUREMENTS

- A =
- B =
- C =
- D =
- E =
- F =
- G =

C = BEAM
 +35MM



SPOT WELDED
 & SILICONE

WIDTH OF BEAM

ALL DIMENSIONS IN MM

TOLERANCES : WHOLE MM = $\pm .5mm$
 ONE DP = $\pm .1mm$
 TWO DP = $\pm .05mm$
 ANGULAR = $\pm .5 deg$
 NOTE: Remove all Burrs and Sharp Edges
 PROJECTION: Third Angle Projection Unless Stated Otherwise

Sigma Sheetmetal Products Ltd
 16A Hill St Drenunga
 P.O.Box 13013 Drenunga, Auckland
 PH (09) 6363657 Fax (09) 6363658
 Email: sigmasheet@xtra.co.nz

REV	REVISION	NAME	DATE
A	ORIGINAL	DAVE	

SCALE	DATE
NTS	17-Mar-15

TITLE	PART NO.
SADDLE FLASHING	
	DRAWING NO.

DRAWN BY
DC